

intelligence²

WORLD OF DEBATE

Room N101, The Hong Kong Convention & Exhibition Centre
Sunday 15 March 2015 • 2:00pm-3:30pm

Intelligence Squared Debate in Hong Kong “The Art World Is A Boys' Club”



Botticelli's Venus. Koon's Cicciolina. Chen Yifei's Beauties.

Historically, the creation of art has been largely the preserve of men. And not a lot has changed. In recent years, the top 100 highest grossing living artists at auction were men, selling predominantly to male buyers. Women run just a quarter of the biggest art museums in the world, earning about a third less than their male counterparts. Yet while gender imbalance remains a fact, things have improved quite dramatically for women in the art world, especially when compared to the business world and its glass ceilings. From Middle Eastern sheikhas to American museum directors, from Korean gallerists to Japanese conceptual artists, the trajectory is up, not down, which is what really matters.

So is the art world a bastion of male privilege and prejudice, or an evolving arena where women are continually breaking the mould? Come to the debate on March 15th, hear the arguments and decide for yourself.

FOR THE MOTION:

Frances Morris
Head of Collections,
International Art,
Tate



Gregor Muir
Executive Director,
Institute of
Contemporary Arts,
London



AGAINST THE MOTION:

Charles Guarino
Publisher of Artforum
International
Magazine



Elaine Kwok
Director of
Education,
Christie's
Education, Asia

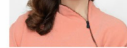


MODERATOR:

Alexandra Munroe
Samsung Senior
Curator, Asian Art,
Solomon R.



Solomon R.
Guggenheim
Museum



Supporting Organisation:



Booking through HK Ticketing required.
HK\$300 per person via HK Ticketing

www.hkticketing.com | +852 3128 8288

www.intelligencesquared.asia

9A Chun Wo Commercial Centre, 23-29 Wing Wo Street, Sheung Wan
E. info@thewomensfoundationhk.org | T. +852-2592-8265 | F. +852-2592-8264

You received this e-mail because you subscribed to The Women's Foundation database.
To unsubscribe, please click [here](#).